



Shellharbour Local Environmental Plan 2000

Legend

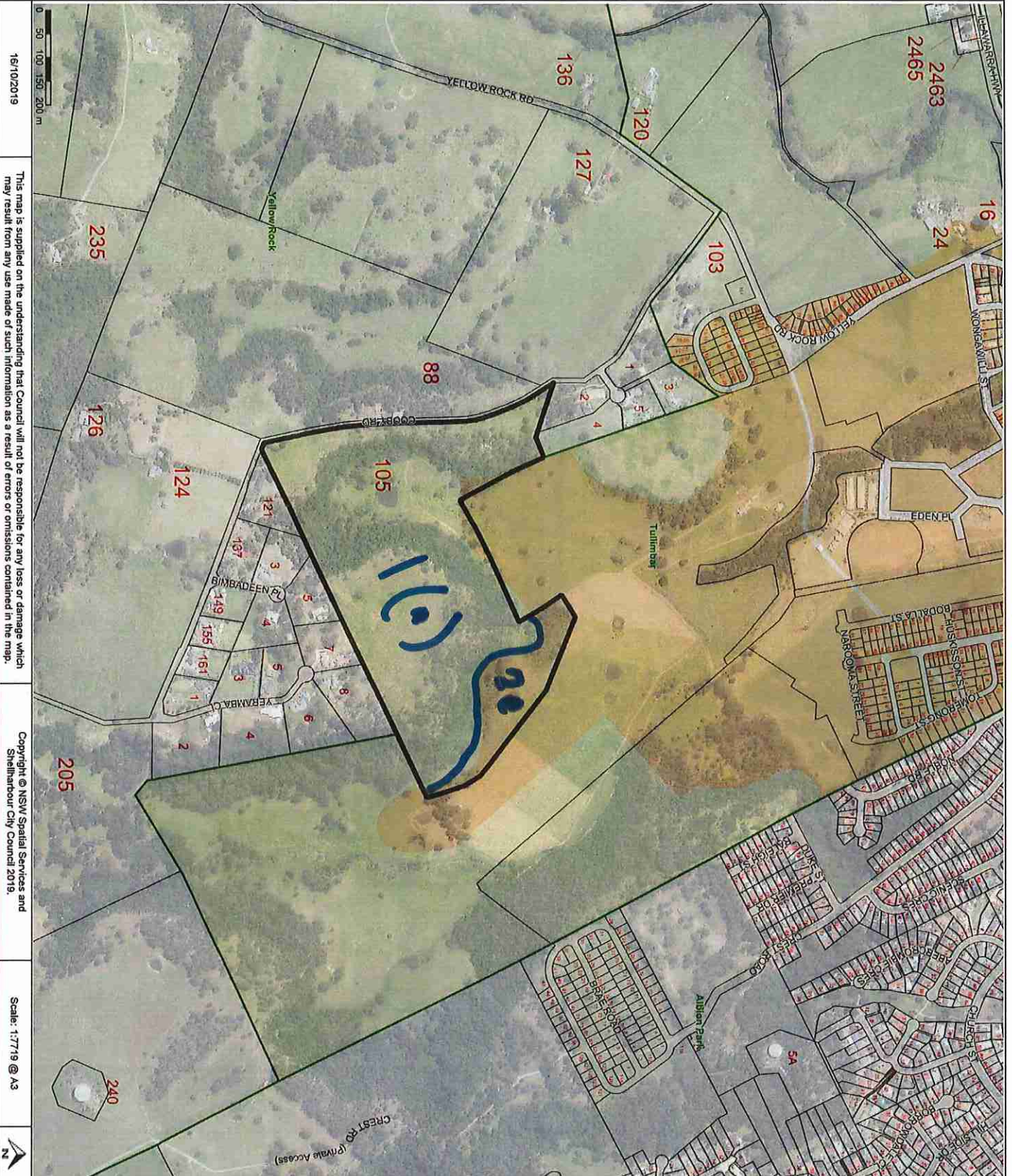
- 1(a) RURAL 'W'
- 1(c) RURAL 'C'
- 1(d) RURAL 'T' (Heritage/Land)
- 2(a) RESIDENTIAL 'W'
- 2(b) RESIDENTIAL 'BT'
- 2(c) RESIDENTIAL 'TZ'
- 2(d) MIXED USE RESIDENTIAL 'E'
- 2(e) MIXED USE RESIDENTIAL 'F'
- 3(a) MIXED USE COMMERCIAL
- 3(b) NEIGHBOURHOOD BUSINESS
- 4(a) LIGHT INDUSTRIAL
- 4(b) AIRPORT LIGHT INDUSTRIAL
- 4(c) SPECIAL INDUSTRIAL
- 4(d) EXTRACTIVE INDUSTRIAL
- 5(a) SPECIAL USES
- 5(b) SPECIAL RAILWAY USES
- 6(a) PUBLIC OPEN SPACE
- 6(b) PRIVATE OPEN SPACE
- 7(a) ENVIRONMENTAL PROTECTION (Wetlands)
- 7(b) ENVIRONMENTAL PROTECTION (Savanna)
- 7(c) ENVIRONMENTAL PROTECTION (Escarpment)
- 7(d) ENVIRONMENTAL PROTECTION (Foreshore)
- 7(e) ENVIRONMENTAL PROTECTION (Living Area 1)
- 7(f) ENVIRONMENTAL PROTECTION (Living Area 2)
- 8 NATIONAL PARKS & NATURE RESERVES
- 9(a) ARTERIAL ROADS RESERVATION
- 9(b) LOCAL ROADS RESERVATION
- 9(c) OPEN SPACE RESERVATION

General

- 1. Land Referred to in Schedule 5/6 as Labeled
- 2. Existing Arterial Roads
- 3. City - Plan Boundary
- 4. Parish Boundary
- 5. Heritage Conservation Area (Refer to Schedule 2)
- 6. Heritage Item (Refer to Schedule 3 for Item Index)
- 7. Jamunero Valley Escarpment Area
- 8. Jamunero Valley Rural Conservation Area
- 9. Quarry Buffer Area
- 10. Damoree Wetland Catchment Protection Area

This map is an extract copy from Shellharbour City Council records. Reference should also be made to the NSW Legislation website www.legislation.nsw.gov.au for full details regarding this LEP.

Attachment 2B LEP 2000



16/10/2019

This map is supplied on the understanding that Council will not be responsible for any loss or damage which may result from any use made of such information as a result of errors or omissions contained in the map.

Copyright © NSW Spatial Services and Shellharbour City Council 2019.

Scale: 1:7719 @ A3